



TUFF COUNTRY

EZ-RIDE SUSPENSION

PART NO. DSD-D3I
DODGE RAM 3" LIFT 1500 & 2500 SERIES
PARTS LIST:

Qty.	Description	Part No.
2	Upper Shock Mounts	D3I-005
1	Driver Side Lower Shock Mount	D3I-006
1	Passenger Side Lower Shock Mount	D3I-007
1	Hardware Bag	DSDD3I-NB
2	Universal Shock Studs	P19
1	Instruction Sheet	DSDD3IINST

Congratulations on your selection to purchase a Tuff Country Suspension System. We at Tuff Country are proud to offer a high quality product at the industries most competitive pricing. Thank you for your confidence in us, and our product.

***Important Notes:** Please read before beginning installation. OEM Manual should be used as a reference.

TUFF COUNTRY SUSPENSION highly recommends a qualified and or certified mechanic to perform this installation.

Check off parts list to be sure all parts are on hand. If any part is missing, you may call Tuff Country at: (800) 288-2190.

Read and understand all sections of instruction manual.

Use locktite on all bolts associated with this installation.

Torque Settings:

5/16"	15-18 ft. lbs.
3/8"	28-32 ft. lbs.
7/16"	30-35 ft. lbs.
1/2"	65-85 ft. lbs.
9/16"	75-90 ft. lbs.
5/8"	85-110 ft. lbs.
3/4"	105-125 ft. lbs.

INSTALLATION MANUAL

FRONT MULTIPLE SHOCKS SYSTEM
1994 - 2000 DODGE RAM 1500 & 2500
PART # DSD-D3I

SJ012099

WARNING: TUFF COUNTRY EZ-RIDE SUSPENSION
HIGHLY RECOMMENDS THAT A CERTIFIED MECHANIC
PERFORMS THIS INSTALLATION.

WARNING

If you desire to return vehicle to stock make
sure to save all stock components.

IMPORTANT CUSTOMER INFORMATION

~~This vehicle's reaction and handling characteristics may differ from standard cars and/or trucks. Modifications to improve and or enhance off road performance may raise the intended center of gravity. Extreme caution must be utilized when encountering driving conditions which may cause vehicle imbalance or loss of control. Drive Safely! Avoid abrupt maneuvers, such as sudden sharp turns, which could cause a roll over, resulting in serious injury or death.~~

It is the customer's responsibility to make sure a re-torque is performed on all hardware associated with this suspension system after the first 100 miles of installation. It is also the customer's responsibility to do a complete re-torque after every 1000 miles or after every off road use.

After the original installation, Tuff Country also recommends having the alignment checked every 6 months to ensure proper tracking, proper wear on tires and front end components. Tuff Country takes no responsibility for abuse, improper installation, or improper suspension maintenance.

IMPORTANT NOTICE

DO NOT install a body lift in combination with a suspension system. If a body lift is used in conjunction with any Tuff Country Suspension product, your Tuff Country WARRANTY WILL BE VOID.

NOTICE

It is the responsibility of the customer or the mechanic to wear safety glasses at all times when working with air tools.

Note: Install the dual shock kit with lifted vehicles only.

Please Follow Instruction Carefully

1. Locate new driver side lower shock mount, from hardware bag DSDD3I-NB locate (2) 5/16" x 1 1/4" bolt, (2) 5/16" lock nuts and (4) 5/16" flat washers. Install new driver side lower shock mount on the outside of the stock upper control mounting bracket. Secure lower hole in shock bracket to stock front upper control arm bracket using (1) 5/16" x 1 1/4" bolt, (1) 5/16" lock nut and (2) 5/16" flat washers **(Hole provided, do not tighten at this point.)** There is a hole provided to fit the upper bolt in the new shock bracket, in some cases this hole needs to be enlarged. If this is the case using bracket as a guide drill a 5/16" hole into stock front upper bracket. Secure upper hole in shock bracket to stock upper control arm bracket using (1) 5/16" x 1 1/4" bolt, (1) 5/16" lock nut and (2) 5/16" flat washers. **(Do not fully tighten at this point).** Repeat procedure on passenger side.

(See Illustration # 1)

2. Working on the driver side install the new upper control arm into stock location using stock hardware. When installing the front bolt, the front bolt will now also go through the new lower shock mount. **(Do not tighten at this point).** Repeat procedure on passenger side.

(See Illustration # 2)

3. Working on the driver side, locate the P19 universal shock bolt and install it to the newly installed lower dual shock bracket. Repeat procedure on passenger side.

(See Illustration # 3)

4. Working on the driver side, locate the new upper dual shock bracket. Install between the stock upper coil spring pocket and the stock upper shock bracket. Secure using the 3/8" hardware that is used in securing upper coil spring spacer to stock upper coil spring pocket. Repeat procedure on passenger side.

(See Illustration # 4)

5. Working on the driver side, locate (1) 1/2" x 3" bolt, (1) 1/2" lock nut and (2) 1/2" washers from hardware bag DSD-D3I. If you are installing the dual shock set up on a 3" kit, install new shock part # LL233 to the upper shock bracket. Secure using 1/2" hardware. Torque to proper spec. Repeat procedure on passenger side. If you are installing the dual shock set up on a 5" kit, install new shock part # LL263 to the upper shock bracket. Secure using 1/2" hardware. Torque to proper spec. Repeat procedure on passenger side.

(See Illustration # 5)

6. Working on the driver side, install the bottom of the shock to the newly installed lower shock bracket. Slide lower shock over the P19 bolt and secure using hardware provided. Repeat procedure on passenger side.

(See Illustration # 6)

Check and double check to make sure that all steps were performed properly. Also at this time check and double check to make sure all bolts are torqued to proper specifications

Congratulations Installation Complete

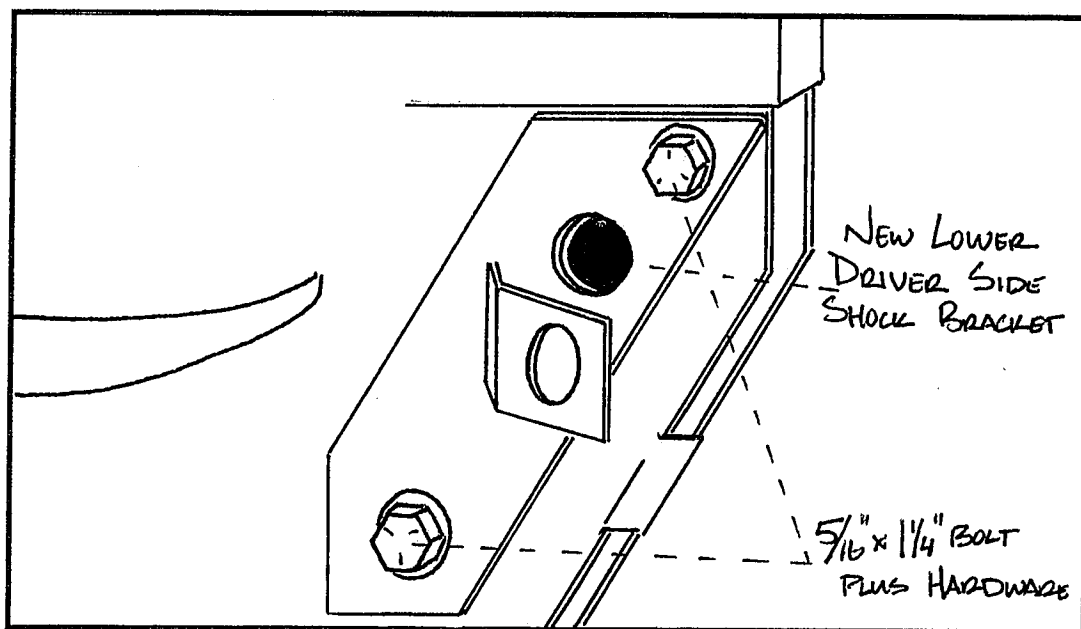


ILLUSTRATION # 1

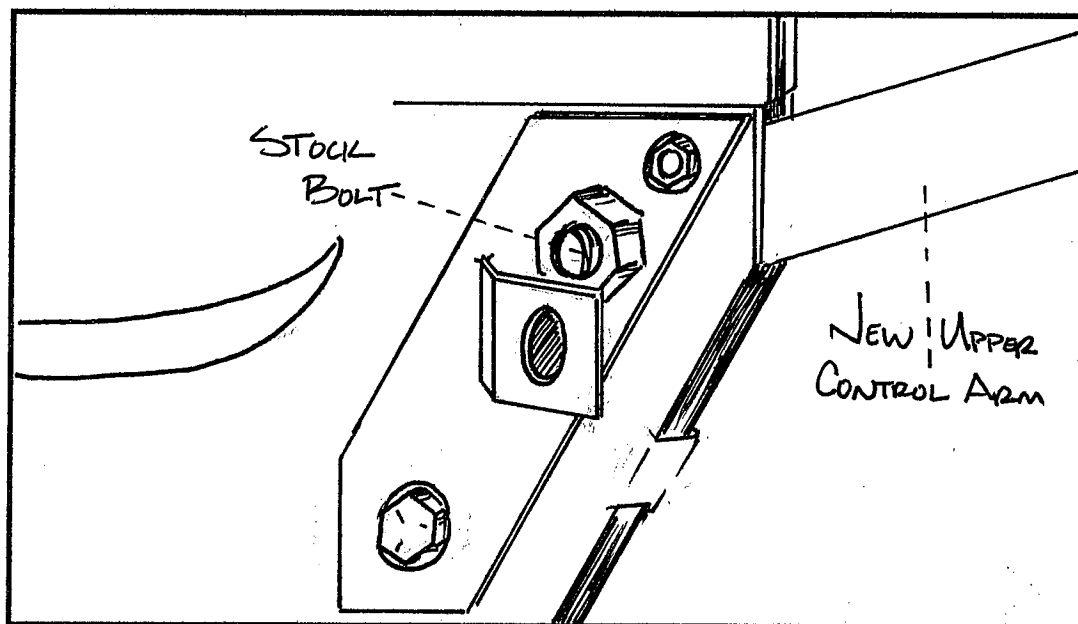


ILLUSTRATION # 2

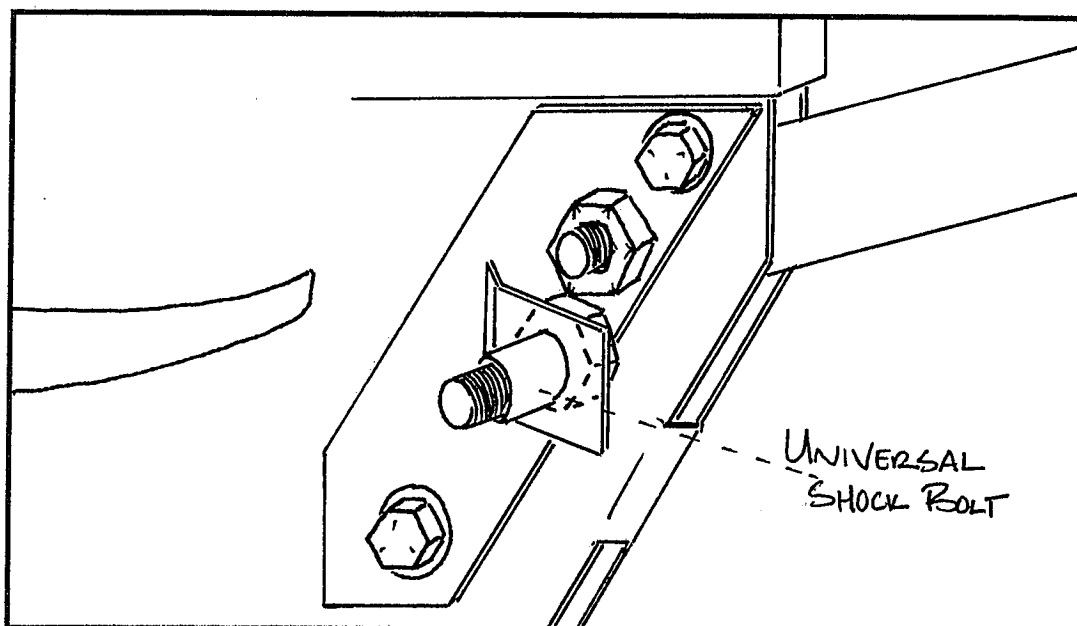


ILLUSTRATION # 3

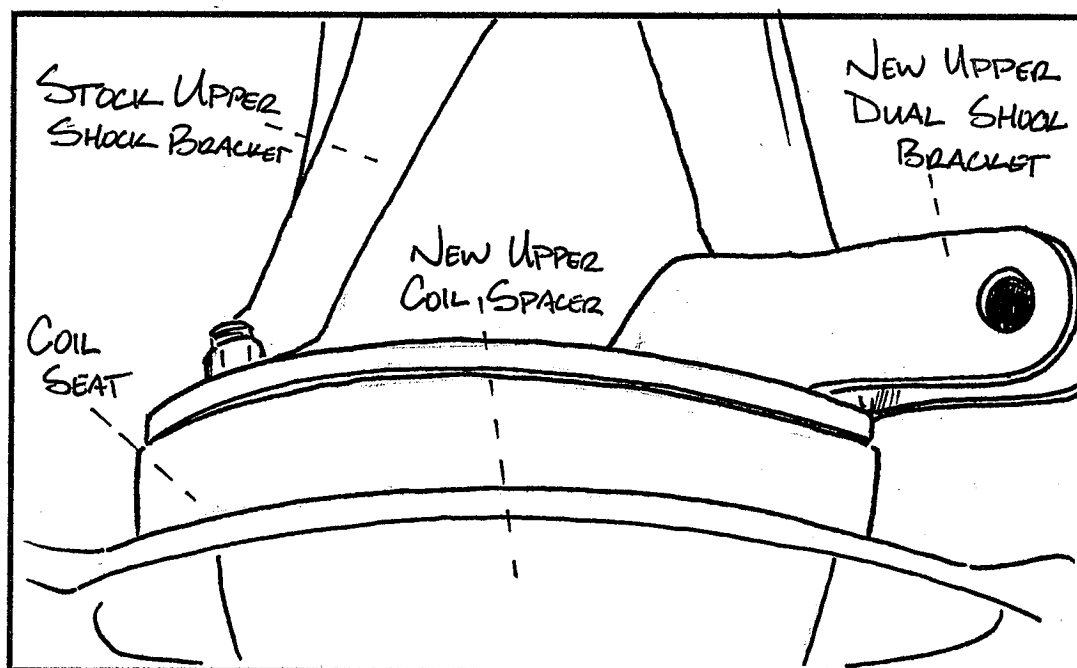


ILLUSTRATION # 4

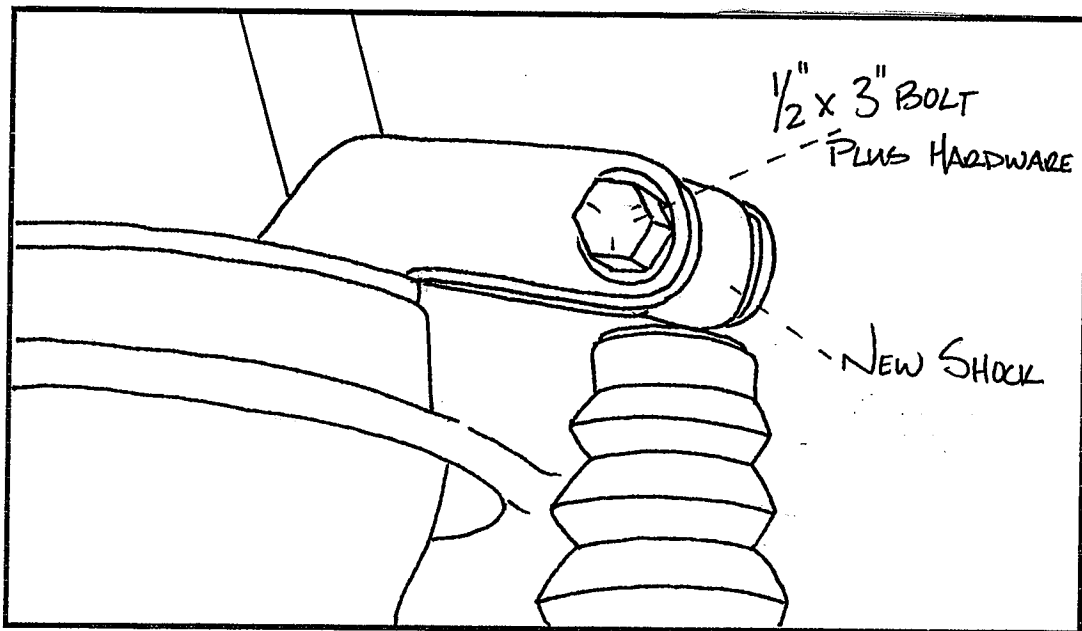


ILLUSTRATION # 5

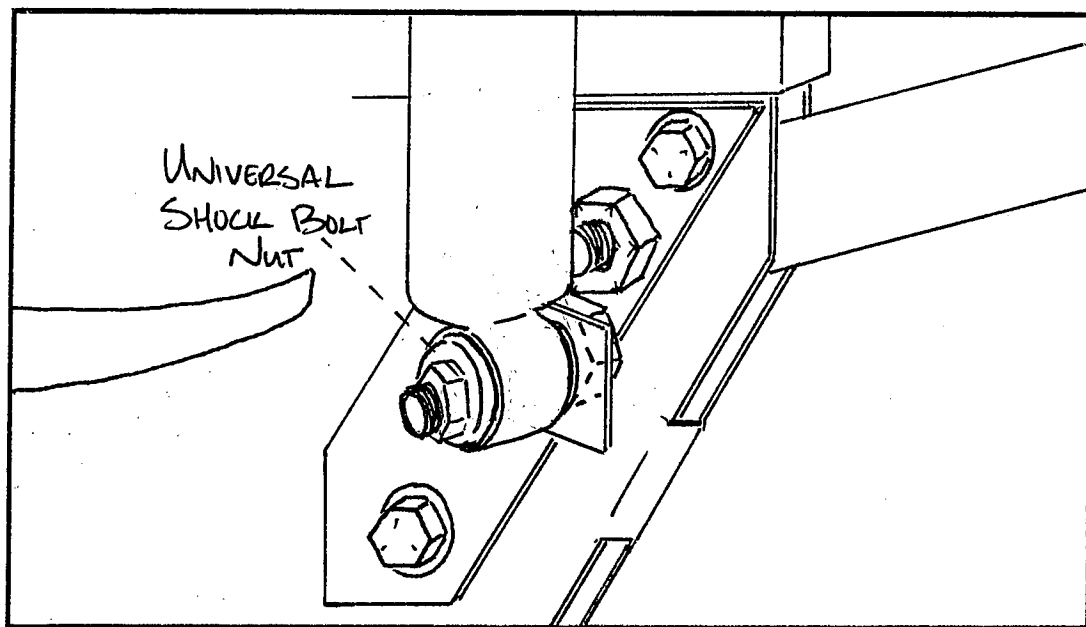


ILLUSTRATION # 6