



## EZ - Ride Suspension

**PART NUMBER : 30901**

**1994 - 2001 DODGE RAM**

**5" TRACK BAR RELOCATION BRACKET**

### PARTS LIST:

Part #	Description	Qty.
D5I-004	Track Bar Relocation Bracket	1
D5I-006	Tapered Track Bar Sleeve	1
D5I-010	Track bar Kicker Support	1
30901NB	Hardware Bag	1
30901INST	Instruction Sheet	1

**Congratulations** on your selection to purchase a Tuff Country EZ-Ride Suspension System. We at Tuff Country are proud to offer a high quality product at the industries most competitive pricing. Thank you for your confidence in us, and our product.

Before installation begins, it is the customers/installers responsibility to make sure that all parts are on hand. If any parts are missing, please feel free to call one of our customer service representative @ (800) 288-2190.

Make sure to use locktite on all new and stock hardware associated with this installation.

It is the responsibility of the installers to make sure that the rear view mirror hanger is hung from the rear view mirror. The rear view mirror hanger has instructions on proper post installation procedures.

### Torque Settings

5/16"	15—18 ft lbs.
3/8"	28—32 ft lbs.
7/16"	30—35 ft lbs.
1/2"	65—85 ft lbs.
9/16"	85—120 ft lbs.
5/8"	95—130 ft lbs.
3/4"	100—140 ft lbs.

## INSTALLATION MANUAL 5" TRACK BAR RELOCATION BRACKET 1994 - 2001 DODGE RAM PART # 30901

SJ11301

Tuff Country EZ-Ride Suspension highly recommends that a qualified and or certified mechanic performs this installation.

If you desire to return your vehicle to stock, it is the customers responsibility to save all stock hardware.

### IMPORTANT CUSTOMER INFORMATION

This vehicles reaction and handling characteristics may differ from standard cars and/or trucks. Modifications to improve and/or enhance off road performance may raise the intended center of gravity. Extreme caution must be utilized when encountering driving conditions which may cause vehicle imbalance or loss of control. **DRIVE SAFELY!** Avoid abrupt maneuvers, such as sudden sharp turns which could cause a roll over, resulting in serious injury or death.

It is the customers responsibility to make sure that a re-torque is performed on all hardware associated with this suspension system after the first 500 miles of installation. It is also the customers responsibility to do a complete re-torque after every 3000 miles or after every off road use.

After the original installation, Tuff Country EZ-Ride Suspension also recommends having the alignment check every 6 months to ensure proper tracking, proper wear on tires and front end components. Tuff Country EZ-Ride Suspension take no responsibility for abuse, improper installation or improper suspension maintenance.

It is the responsibility of the customer or the mechanic to wear safety glasses at all times when performing this installation.

It is the customers/installers responsibility to read and understand all steps before installation begins. OEM manual should be used as a reference guide.

The Tuff Country EZ-Ride Suspension product safety label that is included in your kit box must be installed inside the cab in plain view of all occupants.

**Please Follow Instruction Carefully**

**Before installation begins, drive and check to make sure there are no uncommon sounds and or frame damage. Also at this time, measure from the center of the hub the bottom of the fender well and record measure below:**

1. To begin installation, block the rear tires of the vehicle so that the vehicle is stable and can't roll backwards. Safely lift the front of the vehicle and support the frame with a pair of jack stands. Place a jack stand on both the driver and passenger side. Next, remove the wheels and tires from both sides.
2. Position a pair of hydraulic floor jacks on both the driver and the passenger side under the front axle. Raise up on both hydraulic floor jacks at the same time until the hydraulic floor jacks come in contact with the axle.
3. Working on the driver side, remove the stock castle nut and cotter pin from the stock track bar at the stock track bar location. Save the stock castle nut for later re-installation. The stock cotter pin may be discarded, a new cotter pin is provided.

**See Illustration # 1**

4. Locate (1) new track bar bracket, (1) 1/2" x 2 1/2" bolt, (1) 1/2" unitorque nuts, (2) 1/2" flat washers, (1) 9/16" flat washer (modified), (1) M18 x 70 bolt, (2) M18 flat washers, (1) M18 castle nut and (1) cotter pin from hardware bag labeled D5INB. Also locate the tapered sleeve that was packaged with your instruction sheet.

5. Working on the driver side, install the new tapered sleeve into the stock location where the stock track bar was located. Next, install the new track bar relocation bracket to the stock location and secure using the new M18 x 70 bolt and hardware. **Do not tighten at this point.** Using the hole in the new bracket as a guide, drill a 1/2" hole in the stock cross member. Secure the new track bar bracket to the stock cross member using the new 1/2" x 2 1/2" bolt, 1/2" hardware and 9/16" modified washer. **Refer to the illustration on how to install the new 9/16" modified washer between the new 1/2" washer and the stock cross member. Do not tighten at this point.**

**See Illustration # 2**

6. Locate (1) new track bar kicker support, (2) 3/8" x 1 1/4" bolts, (4) 3/8" flat washers and (2) 3/8" unitorque nuts. Working on the driver side, locate the steering box that is secured to the inside of the stock frame rail. Remove the rear bolt that connects the steering box to the stock frame rail. Secure the new track bar kicker support bracket to the rear hole of the steering box using the stock bolt. **Special Note: Make sure to use locktite when re-installing the stock steering box bolt. Do not tighten at this point.** Secure the other side of the new kicker support bracket to the new track bar bracket that was installed in step # 5, using the new 3/8" x 1 1/4" bolt and hardware.

**See Illustration # 3**

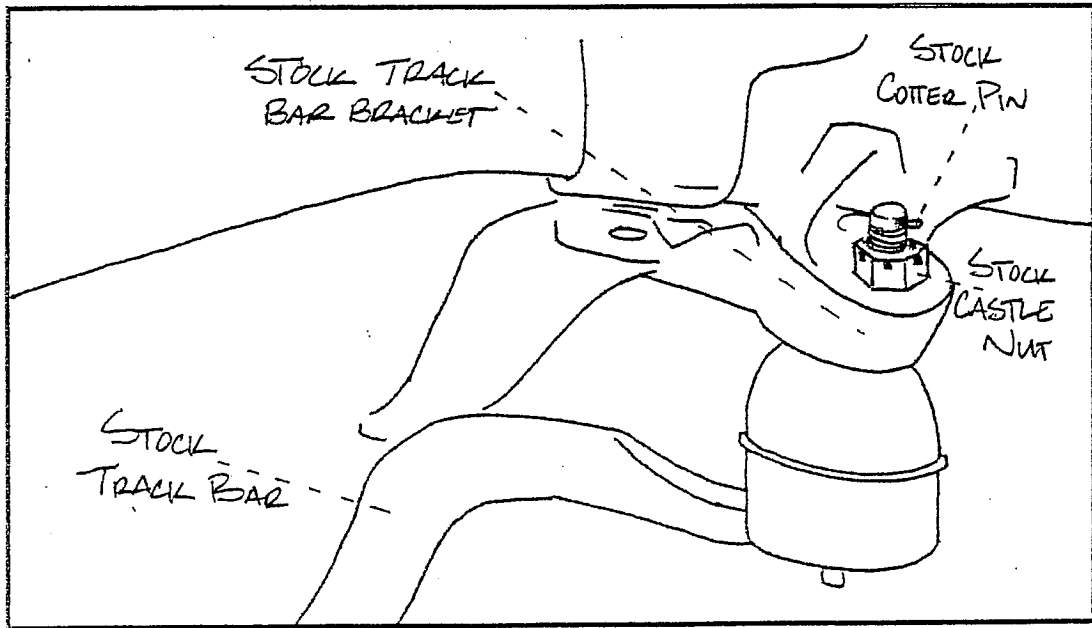
7. Working on the driver side, torque the new M18 x 70 bolt to **135 ft. lbs.** Install the new cotter pin into the newly tighten M18 x 70 bolt. Torque the 1/2" bolt that connects the new track bar relocation bracket to the stock cross member to **85 ft lbs.** Next, torque the stock rear bolt that connect the steering box to the stock frame rail to **125 ft. lbs.** Finally, tighten the 3/8" bolt and hardware that connect the new kicker support bracket to the newly installed track bar bracket to **32 ft lbs.**

8. Install the stock track bar into the newly installed track bar relocation bracket and secure using the stock castle nut that was removed from step # 3. Torque to **85 ft. lbs.** Install the new cotter pin located in the hardware bag labeled D5INB. **Special Note: If you are not able to line up the hole in the new track bar relocation bracket and the stock track bar, the weight of the vehicle may need to be on the ground. If this is the case, perform this step at the end of the installation once the tires and wheels have been re-installed.**

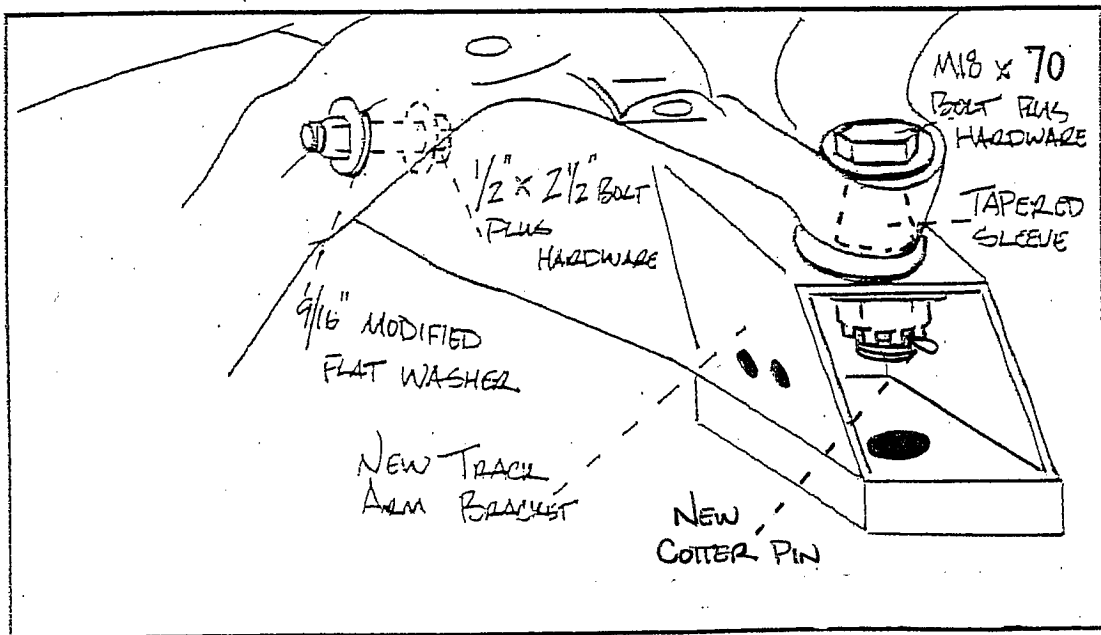
**See Illustration # 3**

9. Carefully remove the (2) hydraulic floor jacks from under the vehicle.
10. Install the tires and wheels safely lower the vehicle to the ground.
11. If you were not able to perform step # 8, perform step # 8 once the weight of the vehicle is on the ground.

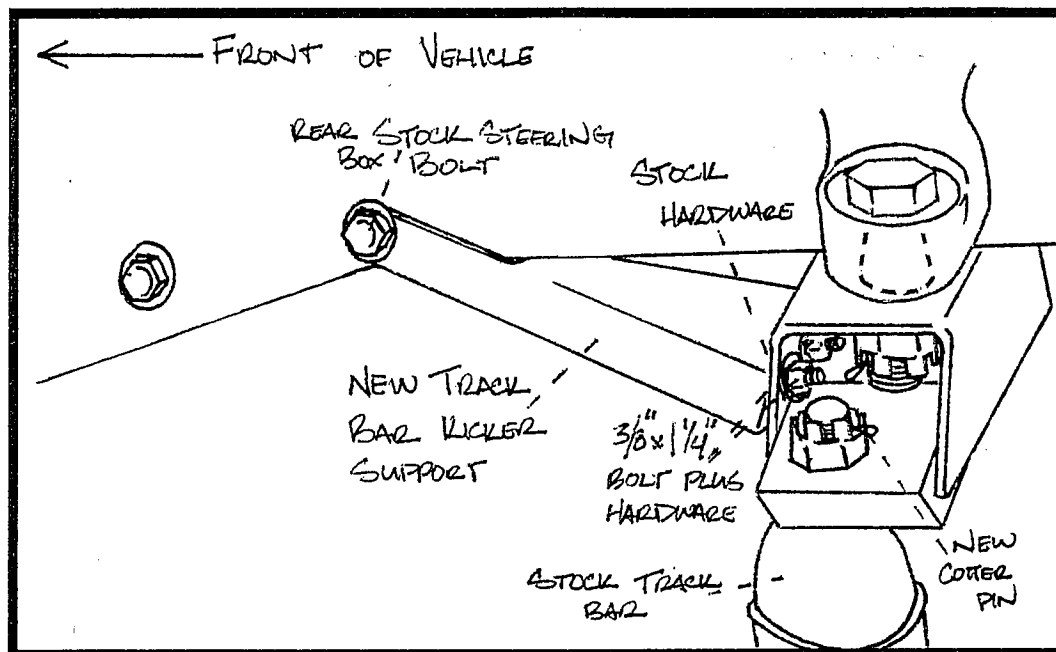
**Congratulation Installation Complete**



**Illustration # 1**



**Illustration # 2**



**Illustration # 3**