



Part #: 22972
2008 Ford F250 / F350
0" - 2.5" track bar relocation bracket

Parts list:

<u>Part #</u>	<u>Description</u>	<u>Qty.</u>
22972-01	Track bar relocation bracket	1
22972NB	Hardware bag	1
22972INST	Instruction manual (customer copy)	
22972INST	Instruction manual (installer copy)	1
MIRRORHANGER	Rear view mirror hanger	1
WARNINGDECAL	Warning decal	1

Congratulations on your selection to purchase a Tuff Country EZ-Ride Suspension System. We at Tuff Country EZ-Ride Suspension are proud to offer a high quality product at the industries most competitive pricing. Thank you for your confidence in us and our product.

Make sure to use thread locker or lock tite on all new and stock hardware associated with the installation of this suspension system.

The Tuff Country EZ-Ride Suspension product safety label that is included in your kit box must be installed inside the cab in plain view of all occupants.

After the original installation, Tuff Country EZ-Ride Suspension also recommends having the alignment checked every 6 months to ensure proper tracking, proper wear on tires and front end components. Tuff Country EZ-Ride Suspension takes no responsibility for abuse, improper installation or improper suspension maintenance.

Installation manual
0" - 2.5" track bar relocation bracket
2008
Ford F250 / F350
Part # 22972

sj021408rev.01

Important customer information

Tuff Country EZ-Ride Suspension highly recommends that a qualified or a certified mechanic performs this installation.

If you desire to return your vehicle to stock, it is the customers responsibility to save all stock hardware.

It is the responsibility of the customer or the mechanic to wear safety glasses at all times when performing this installation.

It is the customers/installers responsibility to read and understand all steps before installation begins. OEM manual should be used as a reference guide.

This vehicles reaction and handling characteristics may differ from standard cars and/or trucks. Modifications to improve and/or enhance off road performance may raise the intended center of gravity. Extreme caution must be utilized when encountering driving conditions which may cause vehicle imbalance or loss of control. **DRIVE SAFELY!** Avoid abrupt maneuvers: such as sudden sharp turns which could cause a roll over, resulting in serious injury or death.

It is the customers responsibility to make sure that a re-torque is performed on all hardware associated with this suspension system after the first 100 miles of installation. It is also the customers responsibility to do a complete re-torque after every 3000 miles or after every off road use.

Torque settings:

5/16"	15—18 ft lbs.
3/8"	28—32 ft lbs.
7/16"	30—35 ft lbs.
1/2"	65—85 ft lbs.
9/16"	85—120 ft lbs.
5/8"	95—130 ft lbs.
3/4"	100—140 ft lbs.

Please follow instructions carefully:

1. Working on the driver side, remove the stock sway bar end link from the stock location and save the stock hardware for later re-installation. Repeat procedure on the passenger side.

2. Block the rear tires of the vehicle so that the vehicle is stable and can't roll backwards. Safely lift the front of the vehicle, and support the frame with a pair of jack stands. Place a jack stand on both the driver and passenger side. Next, remove the tires and wheels from the driver side only.

3. Working on the driver side, remove the stock hardware that attaches the stock track bar to the stock track bar relocation bracket. Let the stock track bar hang. The stock hardware may be discarded.

4. Working on the driver side, remove the (2) stock bolts that connect the stock track bar bracket to the bottom side of the stock frame rail. **Special note: Carefully heat up the (2) stock bolts before removal. This will help melt the lock tite that is on the stock bolts.** Set the stock bolts aside for later re-installation.

Photo # 1 / Photo # 2

5. Working on the driver side, remove the (3) stock nuts and retaining bolts that connect the stock track bar relocation bracket to the stock cross member. Remove the stock retaining bolts from the stock location and reverse them so that they are on the front side of the stock cross member. Set the (3) stock nuts aside for later re-installation. The stock track bar bracket may be discarded.

Photo # 3 / Photo # 4

Photo # 5 / Photo # 6

6. Locate the new track bar relocation bracket. Also, locate the stock hardware. Working on the driver side, install the new track bar relocation bracket to the stock location on the bottom of the stock frame rail and secure using the stock hardware. **Do not tighten at this point and make sure to use thread locker or lock tite. Also, the stock track bar bracket was attached to the front of the stock cross member. The new track bar relocation bracket will be attached to the back side of the stock cross member.**

7. Locate the (3) stock nuts and the stock retaining bolts. Secure the leg of the new track bar relocation bracket to the back side of the stock cross member and secure using the stock hardware. **Special note; The stock track bar bracket was located on the front side of the stock cross member and now the new one is going to be installed on the back side of the stock cross member. Make sure to use thread locker or lock tite. Torque the stock hardware that attaches the leg of the new bracket to the stock cross member to 90 ft lbs. and the stock hardware that attaches the new bracket to the bottom side of the stock frame rail to 75 ft lbs.**

Phot # 7 / Photo # 8

8. Locate (2) CAM-08, (1) CAM-06, (1) M20UN and (1) M20LW from hardware bag 22972NB. Install the stock track bar to the newly installed track bar relocation bracket and secure using the new cam bolt and hardware. **Center the cam bolt and torque to 155 ft lbs. Make sure to use thread locker or lock tite.**

Photo # 9

9. Re-install the tire and wheel on the driver side and carefully lower the vehicle to the ground.

10. Locate the stock sway bar end link and the stock sway bar end link hardware. Working on the driver side, re-install the stock sway bar end link to the stock location and secure using the stock hardware. **Make sure to use thread locker or lock tite and torque the upper hardware to 80 ft lbs. and the lower stock hardware to 65 ft lbs.**

11. Check and double check to make sure that all steps were performed properly and check again. Take the vehicle directly to an alignment shop for a proper front end alignment.

If you have any questions or concerns about the installation, please contact our someone at our technical department @ (801) 280 2777

Congratulations installation complete!

Special note: After the completion of the installation, Tuff Country EZ-Ride Suspension recommends taking the vehicle to an alignment shop and having a proper front end alignment performed.

Tuff Country EZ-Ride Suspension recommends that a complete re-torque is done on all bolts associated with this suspension system. It is the customers responsibility to make sure that a re-torque is performed on all hardware associated with this suspension system after the first 100 miles of installation. It is also the customers responsibility to do a complete re-torque after every 3000 miles or after every off road use. Neglect of following these steps could cause brackets to come loose and cause serious damage to the suspension system and to the vehicle.

Tuff Country EZ-Ride Suspension packages (2) sets of instruction sheets with this box kit. (1) is for the installer and (1) is for the customer. The (1) for the customer has some post installation procedure literature and it is the installers responsibility to make sure that the customer receives a copy of the installation manual along with the literature.

If you have any questions or concerns, please feel free to contact Tuff Country or your local Tuff Country dealer.

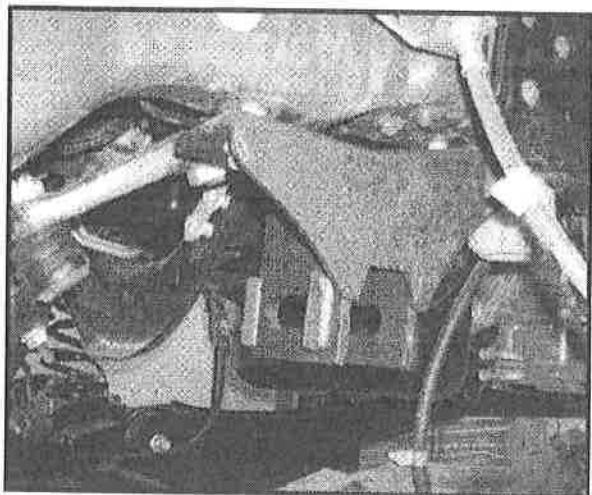


Photo # 7

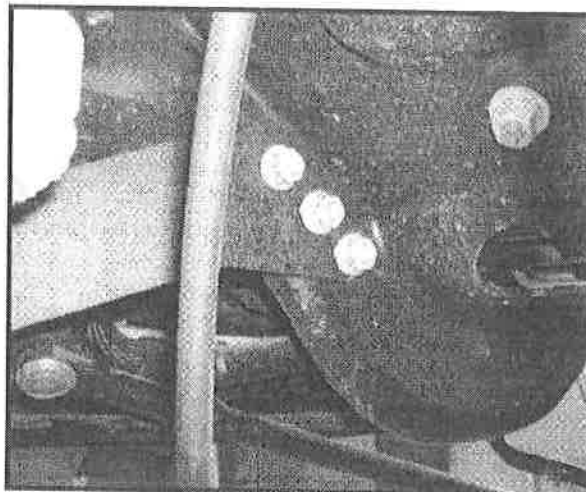


Photo # 8

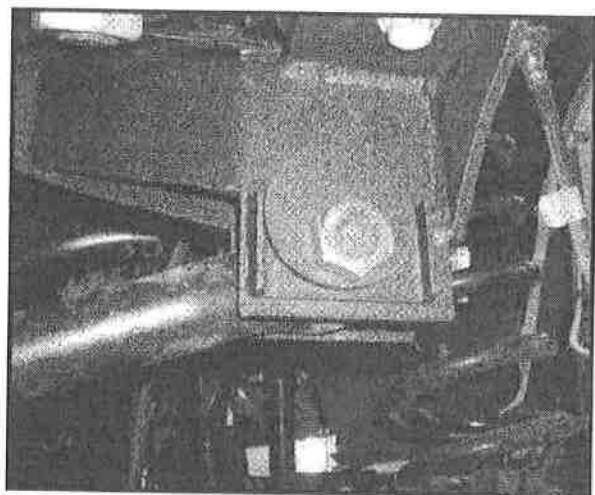


Photo # 9